



## Products and services

[www.blum.com](http://www.blum.com)

 **blum**<sup>®</sup>

## Original Blum quality for problem-free function

Blum's lift, hinge, box and runner systems all use state-of-the-art technology and are based on more than 60 years of experience. Extensive tests ensure problem-free function, from a light opening touch to soft and silent closing. High quality is ensured for the lifetime of the furniture.

 **blum**

# Original



# blum

# Quality

Since



1952

## Contents

- 4 Motion technologies
- 6 Lift systems
- 8 Hinge systems
- 10 Box systems
- 12 Inner dividing systems
- 14 Runner systems
- 16 Assembly devices
- 18 Digital services
- 20 Ideas for practical kitchens
- 22 Blum

# Motion technologies for a high quality of motion

Blum's motion technologies not only make it easier to open and close furniture – they make motion a mesmerising experience. For a high quality of motion in all living areas – electrical or mechanical.

 **blum**





### BLUMOTION

Furniture always closes softly and effortlessly with soft-close BLUMOTION.



### SERVO-DRIVE

Furniture opens at a single touch with the SERVO-DRIVE electric motion support system. SERVO-DRIVE is combined with BLUMOTION.



### TIP-ON BLUMOTION

TIP-ON BLUMOTION combines the advantages of the TIP-ON mechanical opening support system with the reliable BLUMOTION dampening for silent and effortless closing – 100% mechanically.



### TIP-ON

Handle-less fronts open at a single touch with the TIP-ON mechanical opening support system. To close, simply press shut.



# Lift systems for enhanced freedom of movement

AVENTOS lift systems bring a high quality of motion to every wall cabinet. Whether in kitchens or living areas, with large or small fronts, all AVENTOS lift systems open with the utmost ease and close again softly and effortlessly with integrated BLUMOTION. Freedom of motion is guaranteed throughout, and fronts are always out of the user's way.

 **blum**





**AVENTOS HF –  
For bi-fold lift systems**

The solution for high wall cabinets with bi-fold fronts and minimal space requirements above.



**AVENTOS HS –  
For up & over lift systems**

The ideal fitting for large, one-piece fronts. There is enough space above the cabinet for crown mouldings or cornices.



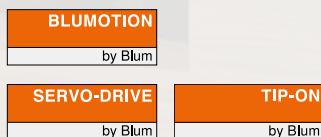
**AVENTOS HL –  
For lift ups**

Suitable for tall cabinets or wall cabinets with fronts positioned above, AVENTOS HL can also be used in tricky installation situations, e.g. integration of electrical appliances into wall units.



**AVENTOS HK –  
For stay lifts**

This convenient lift system for wall cabinets needs little space above fitted cabinets. It is ideal for heavy, one-piece fronts.



**AVENTOS HK-S –  
For small stay lifts**

The right solution for smaller, one-piece lift systems, e.g. above larger units or refrigerators. Its compact dimensions mean that the fitting fits snugly into small furniture.



**AVENTOS HK-XS –  
For small stay lifts**

Suitable for many applications (for both tall cabinets and wall cabinets) and needs very little space. The lift system can even be used for cabinets with low internal depths.



# Hinge systems for numerous installation situations

Blum's comprehensive range of hinges has the right solution for a great many applications. The hinge systems are characterised by reliability, highly convenient adjustment and assembly and attractive design.

 **blum**





### CLIP top BLUMOTION

Innovative technology within the smallest space. CLIP top BLUMOTION has soft-close BLUMOTION seamlessly integrated into the hinge boss.



### CLIP top

Simply clip it on and that's it. CLIP top offers standard and special hinges for a variety of applications. Can be combined with BLUMOTION or TIP-ON.



### MODUL

Classic design and reliable function – MODUL's combined slide-on and screw-fix feature has proven itself over the years. This hinge system is very popular with furniture makers.



# Box systems for a variety of design needs

Blum's box systems offer a wide range of design possibilities and aim to meet the diverse design demands placed on furniture. They boast a feather-light glide, enhanced ease of motion, impressive quality and elegant design.

 **blum**

## LEGRABOX

A sleek and clear-cut design with slim drawer sides of just 12.8 mm – that's LEGRABOX. In addition to LEGRABOX pure with matt, metallic surfaces, the LEGRABOX free design version allows high fronted pull-outs to be customised to individual designs.

**BLUMOTION**  
by Blum

**SERVO-DRIVE**  
by Blum

**TIP-ON  
BLUMOTION**  
by Blum

**TIP-ON**  
by Blum



## TANDEMBOX

TANDEMBOX intivo, TANDEMBOX antaro and TANDEMBOX plus offer a multitude of design options based on a single tried-and-tested cabinet profile.

**BLUMOTION**  
by Blum

**SERVO-DRIVE**  
by Blum

**TIP-ON  
BLUMOTION**  
by Blum

**TIP-ON**  
by Blum



## METABOX

METABOX drawers and pull-outs have just a few component parts and are made of robust materials to suit many different applications. BLUMOTION is available as an optional extra.

**BLUMOTION**  
by Blum



# Inner dividing systems for beautifully organised interiors

Blum's practical inner dividing systems organise every drawer and pull-out. All storage items have their own place and can be stored securely and within easy reach. Storage space can be put to optimal use and tailored to individual needs.

 **blum**

### **AMBIA-LINE for LEGRABOX**

The elegant inner dividing system ensures perfect organisation in all living areas. The frames can easily be positioned wherever required and are available in high-quality materials such as steel and wood design.



### **ORGA-LINE for TANDEMBOX**

ORGA-LINE organises drawers and pull-outs in a practical way. High-quality stainless steel trays ensure clear visibility and easy access. The cross and lateral dividers can be adjusted to accommodate all storage items.



### **Practical kitchen accessories**

The sophisticated kitchen accessories facilitate numerous kitchen tasks. Knives, plates, spices, cling film and aluminium foil can be stored in an organised way and are kept within easy reach at all times.



# Runner systems for ultra-smooth running action

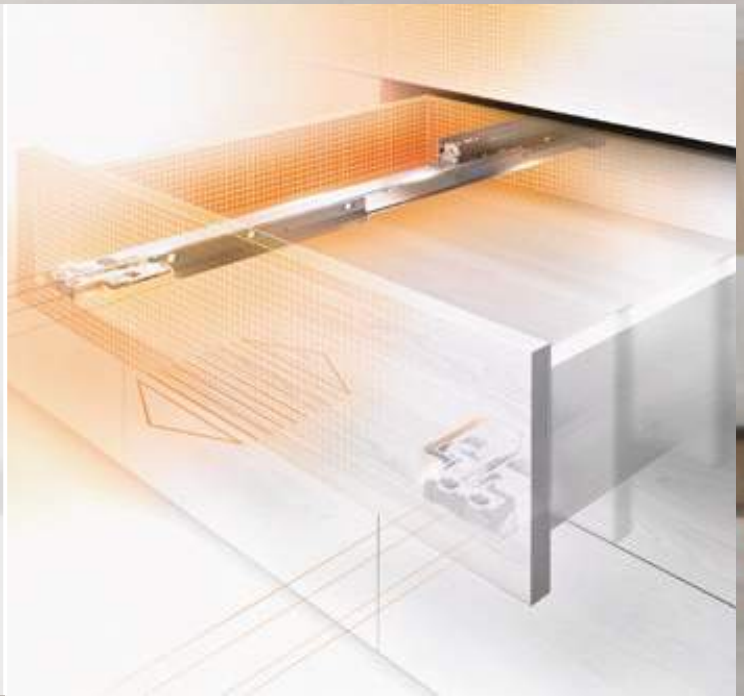
Runner systems ensure that wooden drawers and pull-outs open and close with the required quality of motion. Even heavily laden pull-outs have a feather-light glide and very good sag values. They bring enhanced ease of use to all living areas.

 **blum**



## MOVENTO

The MOVENTO runner system boasts a synchronised feather-light glide, 4-dimensional front adjustment and dynamic load bearing capacities of 40 kg and 60 kg.



**BLUMOTION**  
by Blum

**SERVO-DRIVE**  
by Blum

**TIP-ON  
BLUMOTION**  
by Blum

**TIP-ON**  
by Blum

## TANDEM

TANDEM gives single and full extensions a feather-light glide and enhanced ease of use. Drawers can be equipped with a locking device or hook and peg feature.



**BLUMOTION**  
by Blum

**SERVO-DRIVE**  
by Blum

**TIP-ON**  
by Blum

## STANDARD

STANDARD is a visible runner system with a tried-and-tested roller runner. It only has a few components so assembly is quick and simple.



# Assembly devices for precise assembly

Assembly must be precise to ensure a high quality of motion for lift, hinge, box and runner systems. Blum assembly devices make assembly precise, quick and easy. They meet the most stringent safety requirements.

 **blum**





### Drilling and insertion machines

Blum's wide range of drilling and insertion machines provides users with the right solution for every assembly situation. Quick set-up and easy operation ensure the efficient assembly of all Blum fittings.



### Assembly devices

Assembly devices provide optimal assembly support. They are simple to set up and easy to use.



### Templates and jigs

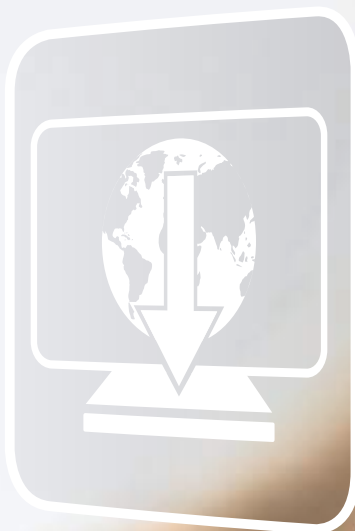
Templates and jigs facilitate precise positioning and ensure that Blum products will function optimally. They can be used in workshops or directly on site.



# Digital services for various work steps

Blum strives to offer its customers and partners as much support as possible – from precise planning and the right choice of products to efficient marketing. Support is provided as required, at the click of a button and around the clock. Useful online services give users 24-hour access to the latest Blum information.

[www.blum.com/services](http://www.blum.com/services)





### Product selection, planning and ordering

The product configurator can be used to create lists of parts which have passed the collision check, to save them directly in the shopping basket and order them from the distributor shop. The DYNALOG software supports precise cabinet planning with DYNAPLAN interfaces, e.g. by exporting data to various CAD/CAM programs.

> [www.blum.com/planningtools](http://www.blum.com/planningtools)



### Marketing

Blum E-SERVICES provide you with access to the latest product information and marketing documentation, such as brochures, photos and films. The information is always up to date and available online 24/7. Blum apps offer additional support for sales talks by providing information and digital magazines.

> [www.blum.com/e-services](http://www.blum.com/e-services)



### Logistics

The order management offers a comprehensive online overview of all order-related information, from the order entry to invoices and delivery notes and to transport and customs documents.



### Assembly and adjustment

The EASY ASSEMBLY app for mobile end devices provides fitters with useful instructions and videos directly on site (partly supported by augmented reality). All information required for easy and precise assembly and adjustment of Blum products can also be accessed offline at any time.

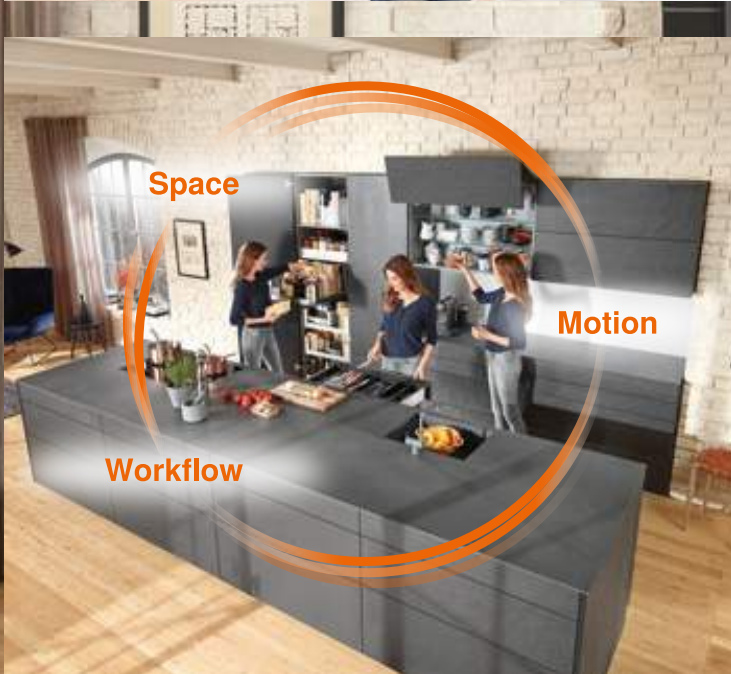


> [www.blum.com/eaapp](http://www.blum.com/eaapp)



### Geared towards kitchen users

Blum has been monitoring kitchen use and investigating the habits and work-flows of kitchen users all over the world for years. The insights gained are used to develop ideas and practical solutions that are tailored to the needs of kitchen users.



### DYNAMIC SPACE

DYNAMIC SPACE is a concept that brings together all of Blum's ideas for practical kitchens. Useful solutions and services are designed to support customers and partners with kitchen planning and marketing.

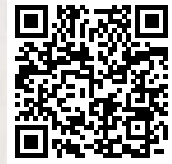


### Practical cabinet solutions

Practical cabinet solutions offer the best support for everyday kitchen use. The SPACE TOWER larder unit can be accessed from three sides. The SPACE CORNER corner cabinet solution and the idea for narrow cabinets provide additional storage space.



Ideas from Blum  
for practical kitchens



➤ More information about practical kitchens.



## Ideas from Blum for practical kitchens

Kitchens are normally put to intensive use and have to withstand the rigours of the daily routine. Blum has been investigating the needs of kitchen users for years and has come up with a multitude of ideas to make modern kitchens even more practical.

[www.blum.com/ideas](http://www.blum.com/ideas)



# The company Blum

Founded over 60 years ago by Julius Blum, Blum is a family-owned company that operates on an international scale. Its strategic business segments include lift, hinge and pull-out systems. All our product developments focus on perfecting motion.

[www.blum.com](http://www.blum.com)

The Blum logo consists of a small white arrow pointing upwards and to the right, followed by the word "blum" in a bold, lowercase, sans-serif font. The entire logo is white and is set against a dark orange background.





**Blum in Austria and around the world**

The company has seven plants in Vorarlberg, Austria, additional production sites in Poland, the USA and Brazil and 29 subsidiaries/representative offices. Blum supplies more than 120 markets. The Blum Group employs 7.300 people in total, 5.500 of whom work in Vorarlberg.



**Global customer benefits**

“Whether manufacturer, distributor, fitter or kitchen user – everybody should personally enjoy the benefits of Blum products” – that is Blum’s philosophy on global customer benefits.



**Innovations**

To support customers with innovative fittings solutions and secure long-term success for the company, we need to consistently invest in research and development, in plants and facilities and in employee training. With more than 2.600 patents worldwide, Blum is one of Austria’s most innovative companies.



**Quality**

Blum’s comprehensive concept of quality does not only apply to products. Services and collaboration with customers and partners should also meet the same quality requirements.



**Environment**

At Blum, we believe that responsible ecological behaviour has long-term economic benefits. The longevity of products is just one of many important aspects. Other important measures include the use of environmentally-friendly processes, the intelligent use of materials and prudent energy management.



**DYNAMIC SPACE**

Good workflows, optimum use of storage space and top quality motion are important features of a practical kitchen. Blum’s ideas for practical kitchens are designed to bring function, convenience and ergonomics to furniture interiors.



Julius Blum GmbH  
Furniture Fittings Mfg.  
6973 Höchst, Austria  
Tel.: +43 5578 705-0  
Fax: +43 5578 705-44  
E-mail: [info@blum.com](mailto:info@blum.com)  
[www.blum.com](http://www.blum.com)

